

PRIM functional documentation

The Regional Mobility Information Platform

Authentication system

Contents

01 Preamble

02 Available data
Datasets
API

03 User support

Preamble

The role of Île-de-France Mobilités

Île-de-France Mobilités is the Organizing Authority for Sustainable Mobility (AOMD) in the Ile-de-France region.

It designs, organizes and finances public transportation for all Ile-de-France residents.

The Organization **also guarantees the quality of the passenger information (transport offer, timetables, pricing and disruption information).**

IDF Mobilités currently has an Information System dedicated to collecting, storing and distributing public transport data. This consists of about **fifteen interfaced applications**, which ultimately offering:

- A range of services for passengers through websites and mobile applications.
- Data and APIs for developers/re-users through the site prim.iledefrance-mobilites.fr

The passenger information business target must register in a **global trajectory** towards **MaaS (Mobility-as-a-Service)**. This essential step consists of **creating a Regional Mobility Information Platform (PRIM)** that:

- Aggregates the entire passenger information offering in terms of services and data;
- Feeds several Front Offices dedicated to different audiences, primarily those of Ile-de-France Mobilités, but possibly also to other customer Front Offices

Authentication system

Datasets

The authentication system for restricted-access datasets on the "PRIM" site

The dataset authentication system enables all users to insert a single authentication token to automate the download of datasets subject to the Mobility License.

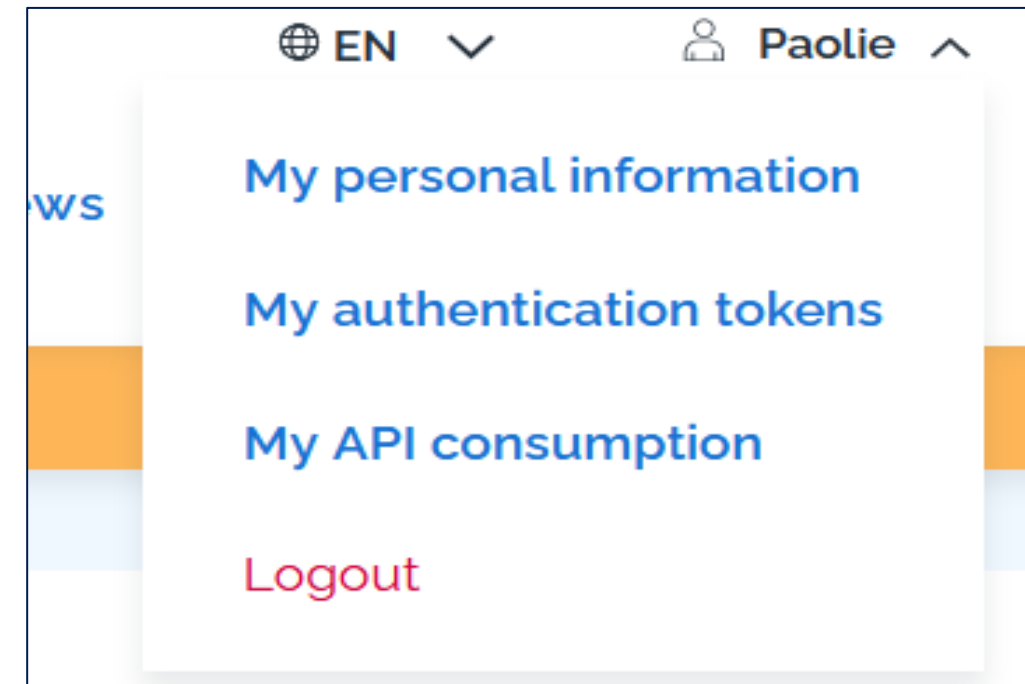
The datasets subject to this license are as follows:

- [Scheduled public transport timetables \(GTFS Datahub\)](#)
- [Real-time data available on the Île-de-France Mobilités exchange platform](#)
- [Elevator status](#)

Authentication system for restricted-access datasets on "PRIM" website

1

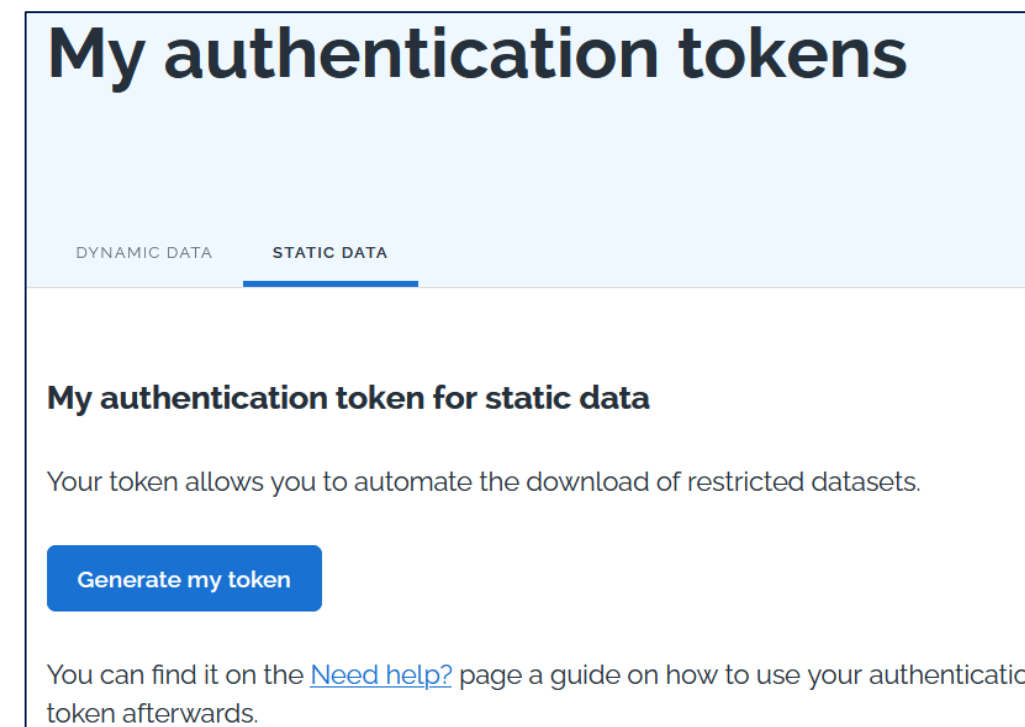
Go to page



"To generate an **authentication token**: log in, go through your personal menu and click on "**My authentication tokens**"

2

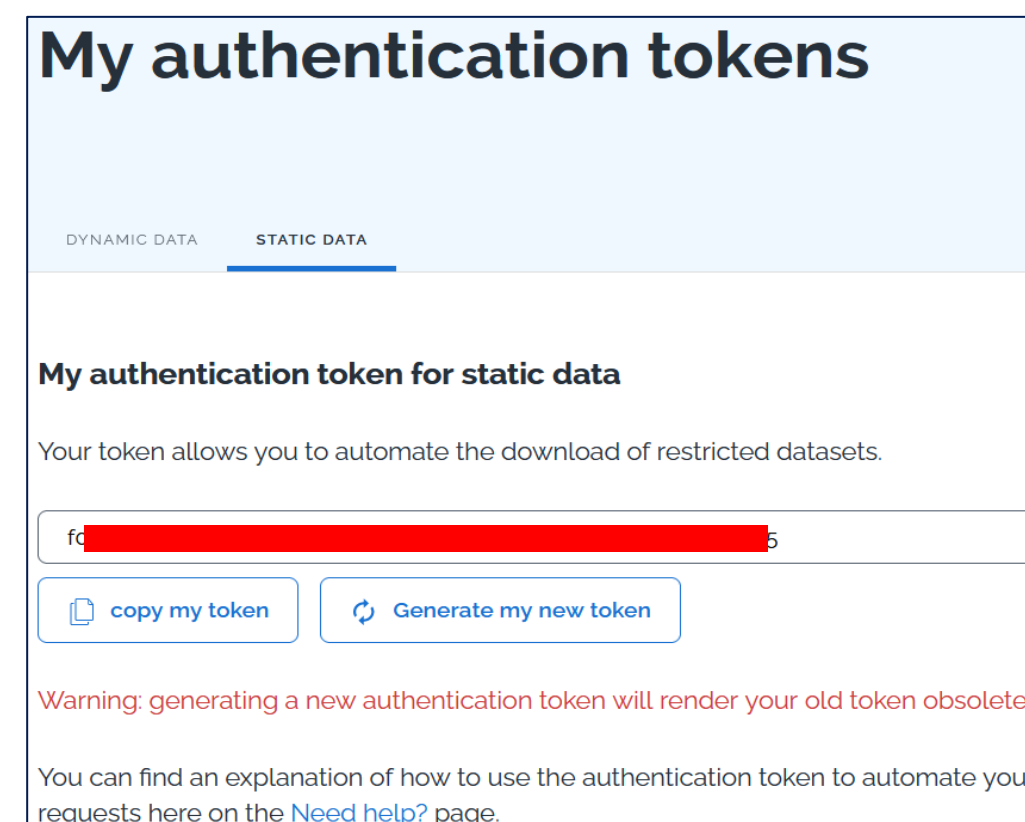
First token generation



Once on the "**My authentication tokens**" page, select the "**Static data**" tab and click on "**Generate a token**".

3

Viewing and copying tokens



Once generated, you can **view the entire token** and **copy it to your clipboard** (the entire token has been hidden in the example on the left).

Authentication system for restricted-access datasets on "PRIM" website

4

Regeneration

Generate my new token

You are about to generate a new authentication token. This will make your old token obsolete. Would you like to confirm the generation ?

Cancel Confirm

The **previously generated token will always be visible** and will not be hidden when the page is reloaded.

You can also regenerate your token: simply click on **"generate my new token"** and then on **"confirm"**.

Please note: This will make your previous token obsolete.

5

Inserting the token

Params • **Authorization** • Headers (7) Body Pre-request Script Tests Settings

Type **API Key** Key Authorization

The authorization header will be automatically generated when you send the request. Learn more about [authorization](#) ↗

Value **apikey c** [redacted]

Add to Header

Once your token has been generated on -PRIM website, simply select **"API Key"** as the **authentication** type, then enter :

"Authorization" in the **"Key"** field

"apikey" + the value of your key (the two must be separated by a space, as shown in the screenshot) in the **"Value"** field

Authentication system

API

The API authentication system on the "PRIM" website


4 Token copy


My authentication token for dynamic data

Your new API token has been generated, you will need it to call the Webservices of the PRIM platform. Its use is done through the HTTP header « apiKey »

Take note of your API token. It will only be visible once in its entirety. You can consult a partial version afterwards to verify it.

w [REDACTED] n

 copy my token

 Your authentication token has been successfully copied to the clipboard


The previously generated token will only be visible once in its entirety, so you can **copy** it and paste it in a safe place.

5 Partial visualization

My authentication token for dynamic data

Your current API token allows you to access API functionality. you will need it to call the Webservices of the PRIM platform. Its use is done through the HTTP header « apiKey »

FH42*****5DXs

 Generate my new token

Warning: generating this new API token will make your old token obsolete.

After generating your first **token**, you can refresh or return to the page to see only part of it (first 4 and last 4 characters).

6 Regeneration

You can regenerate your API **token** if you've lost the **first one**: just click on "**Generate a new API token**".

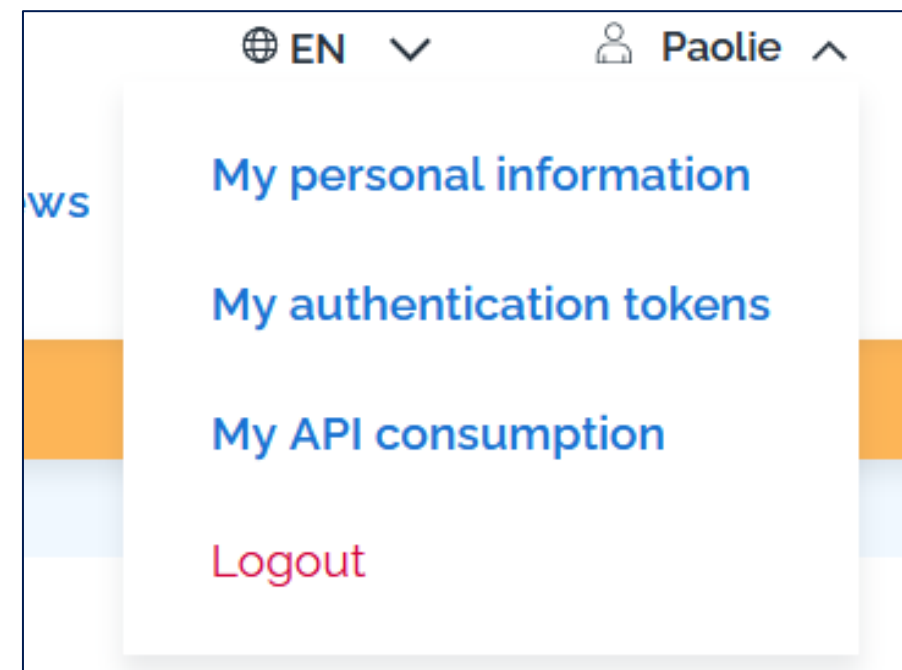
Please note: this token will make the previous token obsolete and will only be visible in its entirety once.

The API authentication system on the "PRIM" website

The authentication system for dynamic data allows all API users to have a single authentication token to insert in their API requests.

1

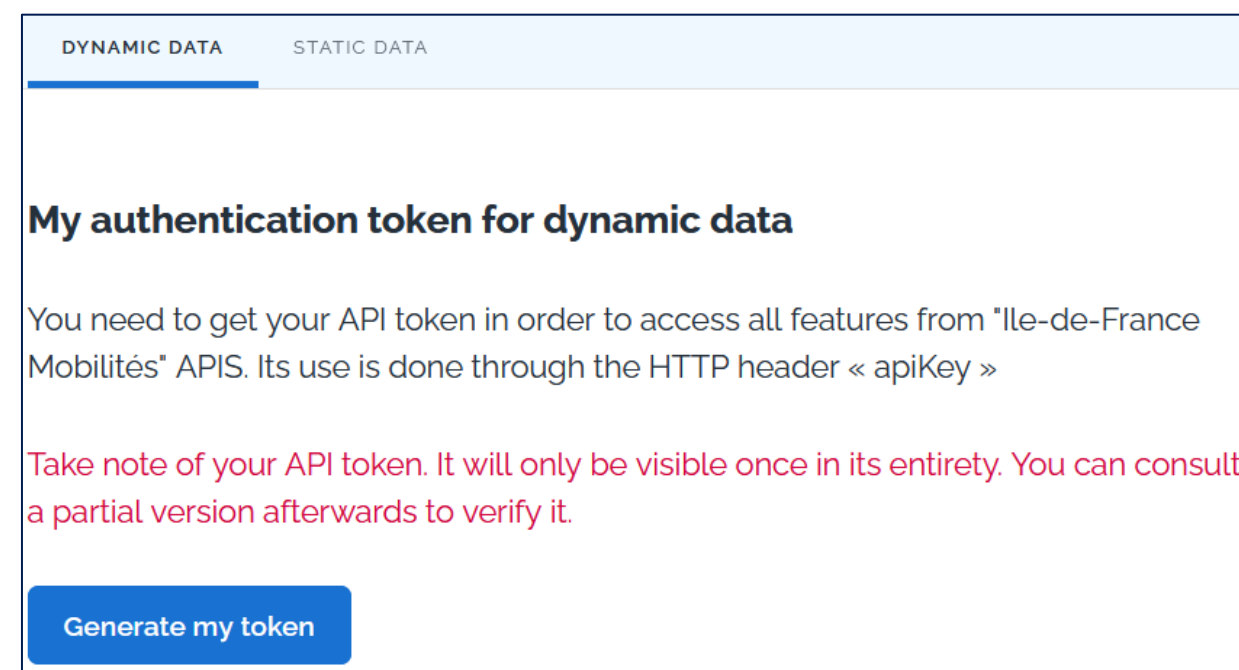
Go to page



"To generate an **authentication token**: log in, go through your personal menu and click on "**My authentication tokens**"

2

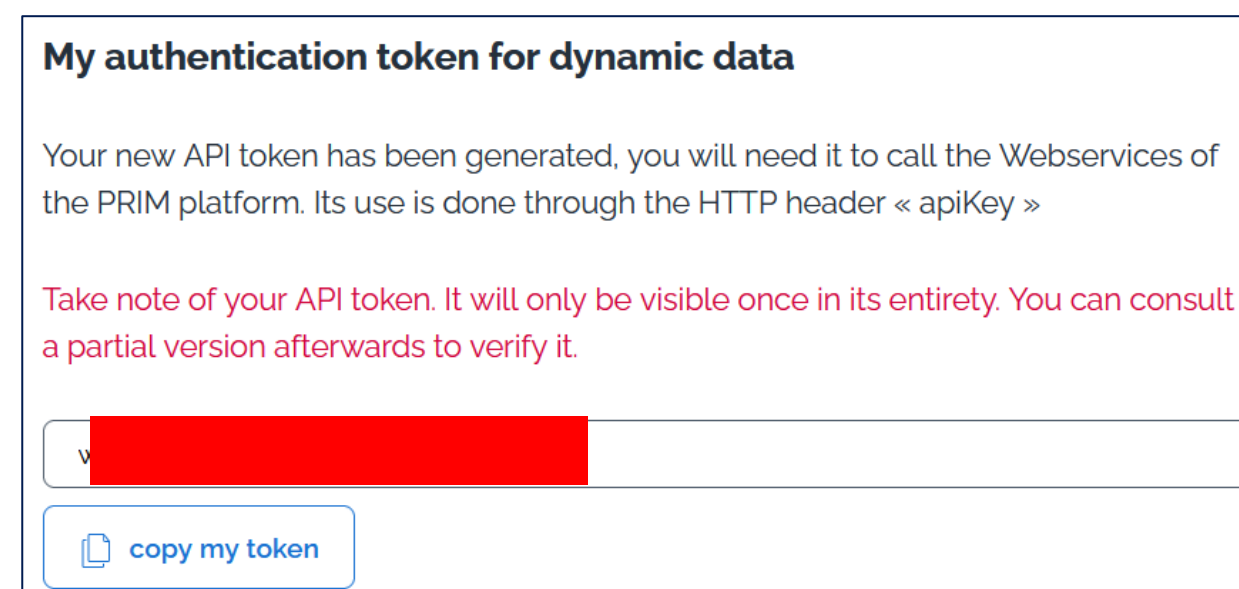
First token generation



Once on the "**My authentication tokens**" page, within the "**Dynamic data**" tab, a "**Generate my token**" button will allow you to generate this token.

3

Viewing and copying tokens



Once generated, you'll be able to see **the token** in its entirety (the entire token has been hidden in the example on the left).

The API authentication system on the "PRIM" website

7

Inserting the token

KEY	VALUE
<input checked="" type="checkbox"/> apikey	OE0 [REDACTED] me

Once your token has been generated on the PRIM site, simply add the **"API Key"** field to your request header and enter the generated key in the **"Value"** section

Requesting an API: sample Python code

```
#####  
# Ile-de-France Mobilités Next Source Passages API request - unitary  
  
# coding: utf8  
#####  
1 import requests  
2 from requests.auth import HTTPBasicAuth  
  
3 #IDFM Next Source Passages API url - unitary request  
4 url = 'https://prim.iledefrance-mobilites.fr/marketplace/stop-  
5 monitoring?MonitoringRef=STIF%3AStopPoint%3AQ%3A22113%3A'  
  
6 #The header must contain the API key: apikey, please replace #YOUR API KEY with  
7 your API key  
8 headers = {'Accept': 'application/json', 'apikey': '#YOUR API KEY'}  
  
9 #Send request to server  
10 req = requests.get(url, headers=headers)  
11 #Display response code  
12 print('Status:', req)  
13 #Display response content  
14 print(req.content)  
  
15 #Write received response to file  
16 open('Reponse.xml', 'wb').write(req.content)
```

2 - Request library import

Line 3-5 - Assign API url to url variable

Line 6-8 - Assign header information including your API token (apikey) to the header's variable

> **Once connected, you can generate your API token (apikey) by following the steps described here**

Lines 9 - 10 - The requests.get function takes two arguments: the API url and the header containing the information required for authentication.

Lines 11 - 14 - Display of the various response elements. If the response status is **200** (OK), the request has been successful, and the response will be displayed on the terminal and in a file named **Reponse.xml**.

If you obtain a code other than **200**, please see the following [slide for more details](#), the response will also be displayed on the terminal and in a file named **Reponse.xml**.

Line 15-16 - Storing the response in a file named **Reponse.xml**.

Support & Documentation

Support & Documentation

The PRIM Support team will help you use these services through the various documentations provided. Support can be reached by e-mail or through the "Slack" instant discussion forum.

Do you have a question?
A suggestion for improvement?
Don't hesitate to contact us via our
support e-mail: [contact-prim@iledefrance-
mobilites.fr](mailto:contact-prim@iledefrance-mobilites.fr)



[Prim platform presentation \(PDF\)](#)