

PRIM functional documentation

The Regional Mobility Information Platform

Available data

Contents

01 Preamble

02 Available data
Datasets
API

03 User support

Preamble

The role of Île-de-France Mobilités

Île-de-France Mobilités is the Organizing Authority for Sustainable Mobility (AOMD) in the Ile-de-France region.

It designs, organizes and finances public transport for all Ile-de-France residents.

The company also guarantees the quality of passenger information (transport offer, timetables, fares and disruption information).

IDF Mobilités currently has an Information System dedicated to collecting, storing and distributing public transport data. This consists of about **fifteen interfaced applications**, which ultimately offering:

- A range of services for passengers through websites and mobile applications
- Data and APIs for developers/re-users through the site prim.iledefrance-mobilites.fr

The passenger information business target must register in a **global trajectory** towards **MaaS (Mobility-as-a-Service)**. This essential step consists of **creating a Regional Mobility Information Platform (PRIM)** that:

- Aggregates the entire passenger information offering in terms of services and data;
- Feeds several Front Offices dedicated to different audiences, primarily those of Ile-de-France Mobilités, but possibly also to other customer Front Offices

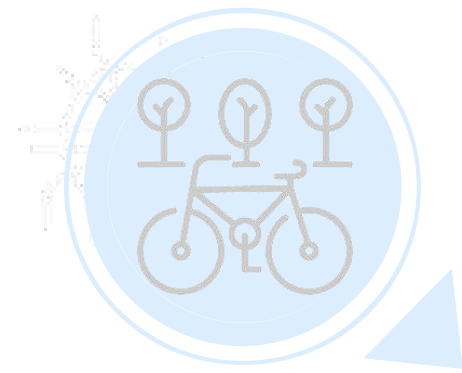
Available data

Datasets

The data catalog

In the dataset catalog, you'll find over sixty datasets classified according to different themes. You can consult the list of available datasets and access their information pages. The dataset service offers data visualization through maps.

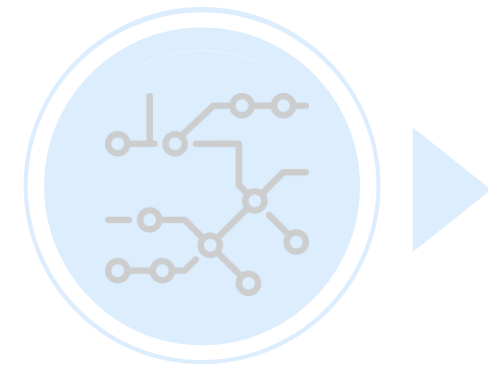
Bikes & New Mobilities
Datasets, mainly "Bicycle" data



Stops
Datasets including stop repositories, schematic plans and layouts, stations and terminals



Lines
Datasets including line reference systems, timetables, maps and schematic layouts



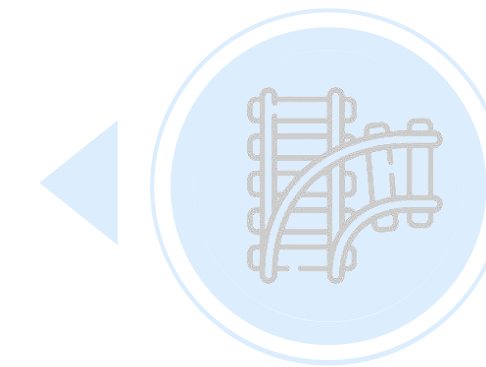
Fares & Sales
Datasets describing the available transport offer as well as fares and points of sale



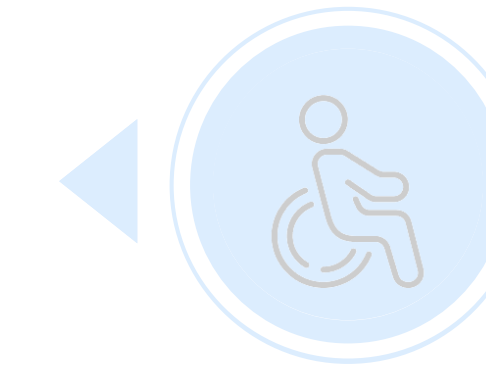
Traffic and Timetables
Datasets for traffic information and monthly schematic maps of roadworks



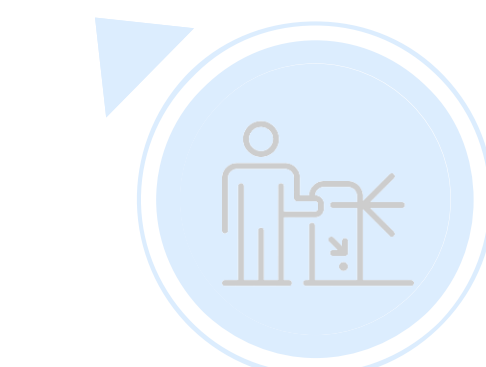
Data outside the LOM law
Datasets on various administrative information



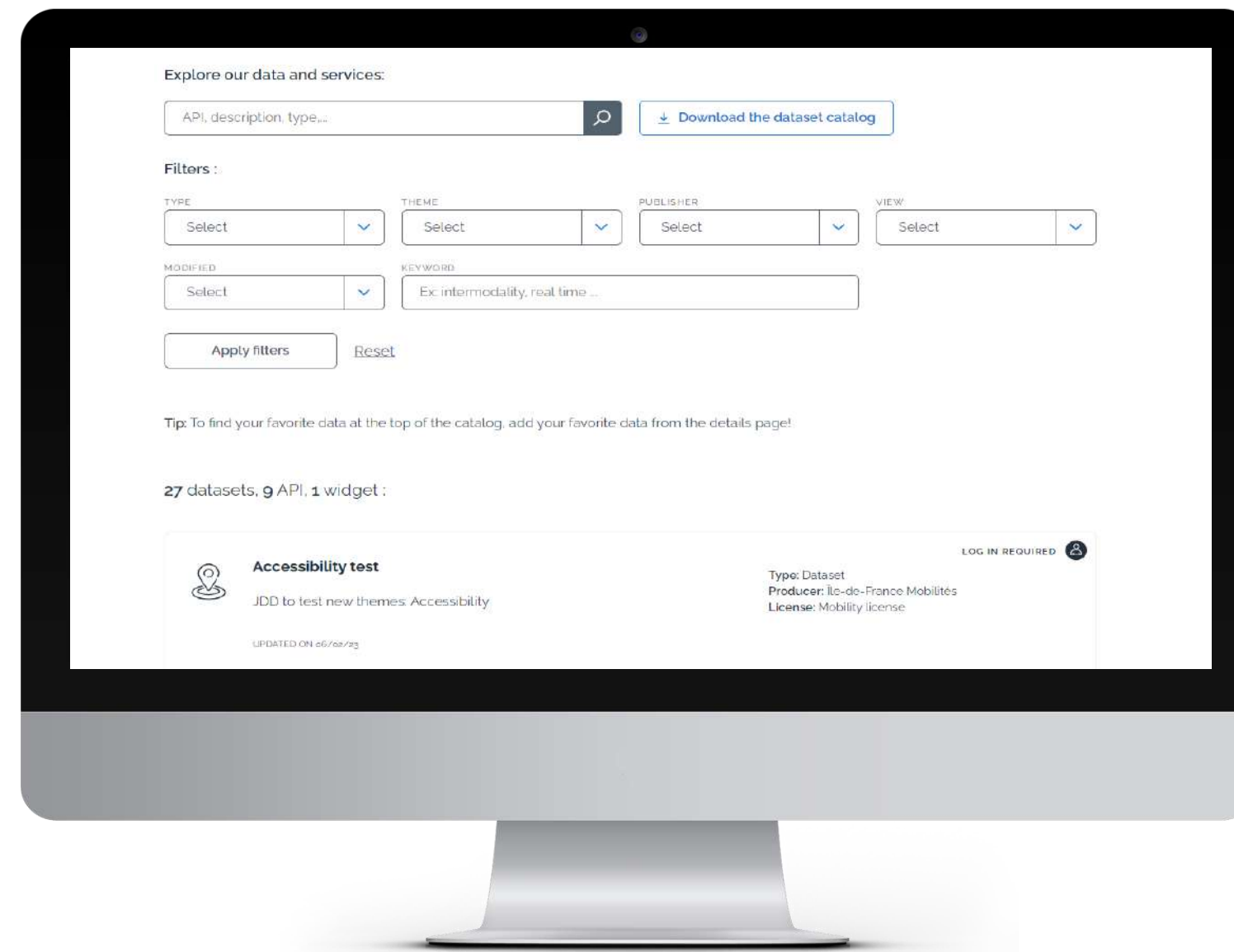
Transportation infrastructure
Datasets describing available facilities



Accessibility
Datasets including programmed accessibility master plans and elevator status



Measured ridership
Datasets showing validation data for the various networks



Available data

API

The different APIs

Next passages Real time

Next Passages (IDFM platform) - Global query

Next transit times for all currently available stops in the network, in a single exchange..

Next Passages (IDFM platform) - Unitary request

Next passages at a stop or on a line.

Display messages on screens

Messages displayed on screens (IDFM platform)

RATP, SNCF, ALBATRANS disruption messages

Île-de-France mobilités calculator theoretical itineraries

IDFM Calculator - Generic access
(timetables, routes, network structure, lines and stops, etc.)

IDFM Calculator - Isochrones
(timetables, routes, network structure, lines and stops, etc.)

IDFM Calculator - Traffic info messages
(timetables, routes, network structure, lines and stops, etc.)

Different possible response codes



200

The request is successful, and you receive a reply



400

Query contains unknown identifiers

->We advise you to check that the combination: (StopPoint,[ArRId]) or (StopArea, [ZdAId] or [ZdCId]) of the MonitoringRef parameter is correct.

401

You are not authorized to access the API

403

-> We advise you to renew your token and check that it has been added to your request header.

404

Your request contains an error

-> We advise you to check your call parameters

429

You've reached your quota

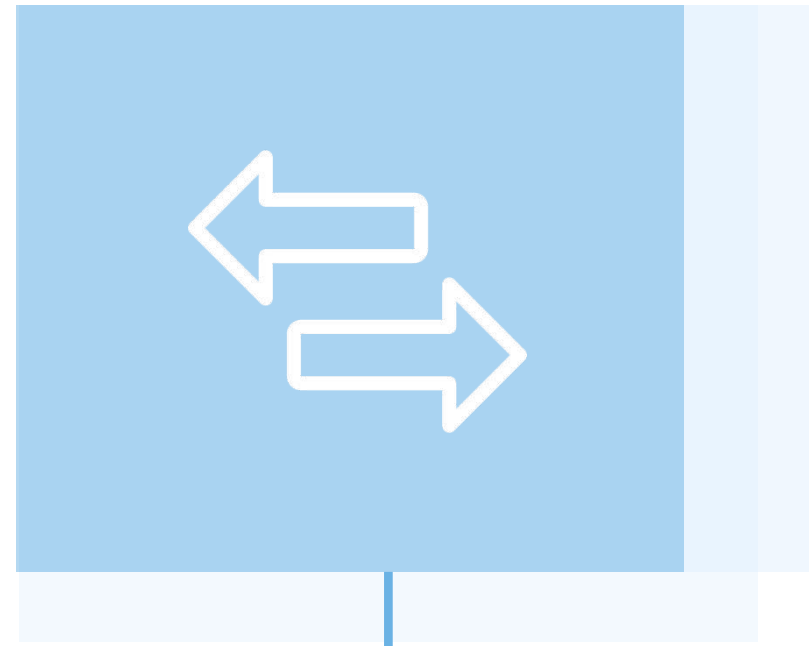
->You can access all the quota information in the header of the answer.

500

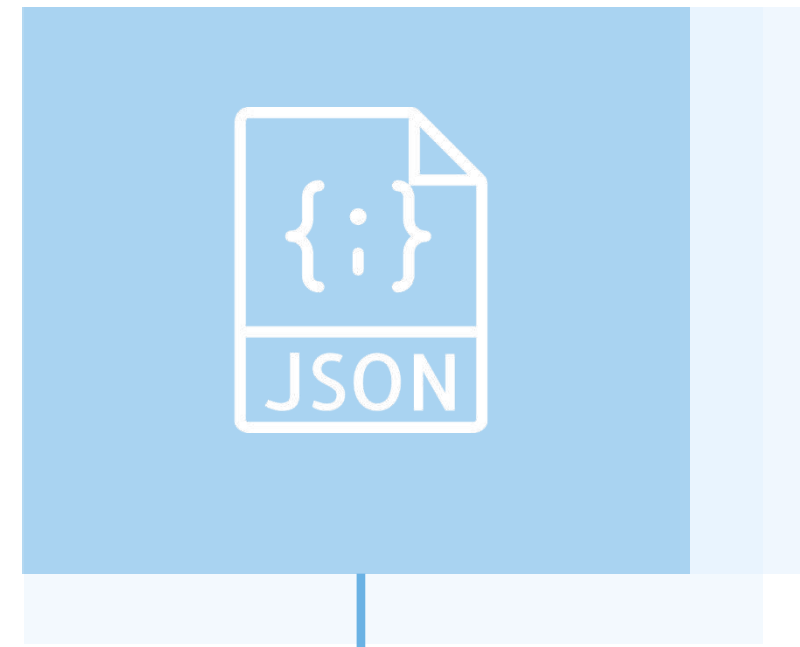
API is unavailable

-> Please contact us!

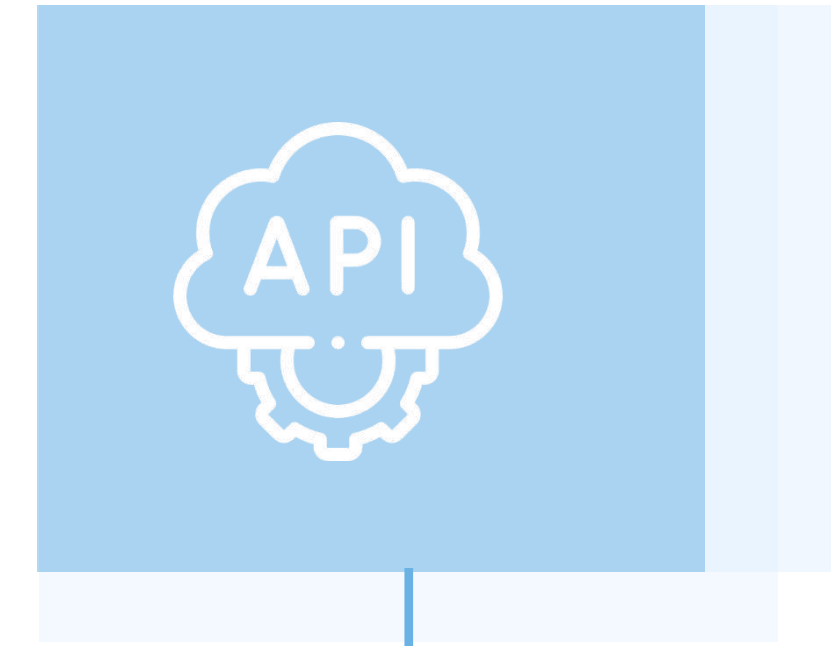
Best practices



Call quotas are per day: we strongly recommend **smoothing out the number of requests** over time so as not to disrupt operations for other users.



Given the very large size of the response to the "Next Passages" global request, it will be transmitted in **compressed mode**.



We recommend that you activate the **"Accept-encoding : gzip, deflate"** element in your request headers to optimize API response time.

Support & Documentation

Support & Documentation

The PRIM Support team will help you use these services through the various documentations provided. Support can be reached by e-mail or through the "Slack" instant discussion forum.

Do you have a question?
A suggestion for improvement?
Don't hesitate to contact us via our
support e-mail: contact-prim@iledefrance-mobilites.fr

 [Prim platform presentation \(PDF\)](#)

