

# PRIM functional documentation

## The Regional Mobility Information Platform

Authentication system

# Contents

**01** Preamble

**02** Available data  
Datasets  
API and Widget

**03** User support

# Preamble

# The role of Île-de-France Mobilités

Île-de-France Mobilités is the Organizing Authority for Sustainable Mobility (AOMD) in the Ile-de-France region.

It designs, organizes and finances public transportation for all Ile-de-France residents.

The Organization **also guarantees the quality of the passenger information (transport offer, timetables, pricing and disruption information).**

IDF Mobilités currently has an Information System dedicated to collecting, storing and distributing public transport data. This consists of about **fifteen interfaced applications**, which ultimately offering:

- A range of services for passengers through websites and mobile applications.
- Data and APIs for developers/re-users through the site [prim.iledefrance-mobilites.fr](http://prim.iledefrance-mobilites.fr)

The passenger information business target must register in a **global trajectory** towards **MaaS (Mobility-as-a-Service)**. This essential step consists of **creating a Regional Mobility Information Platform (PRIM)** that:

- Aggregates the entire passenger information offering in terms of services and data;
- Feeds several Front Offices dedicated to different audiences, primarily those of Ile-de-France Mobilités, but possibly also to other customer Front Offices

# Authentication system

Datasets

## The authentication system for restricted-access datasets on the "PRIM" site

The dataset authentication system enables all users to insert a single authentication token to automate the download of datasets subject to the Mobility License.

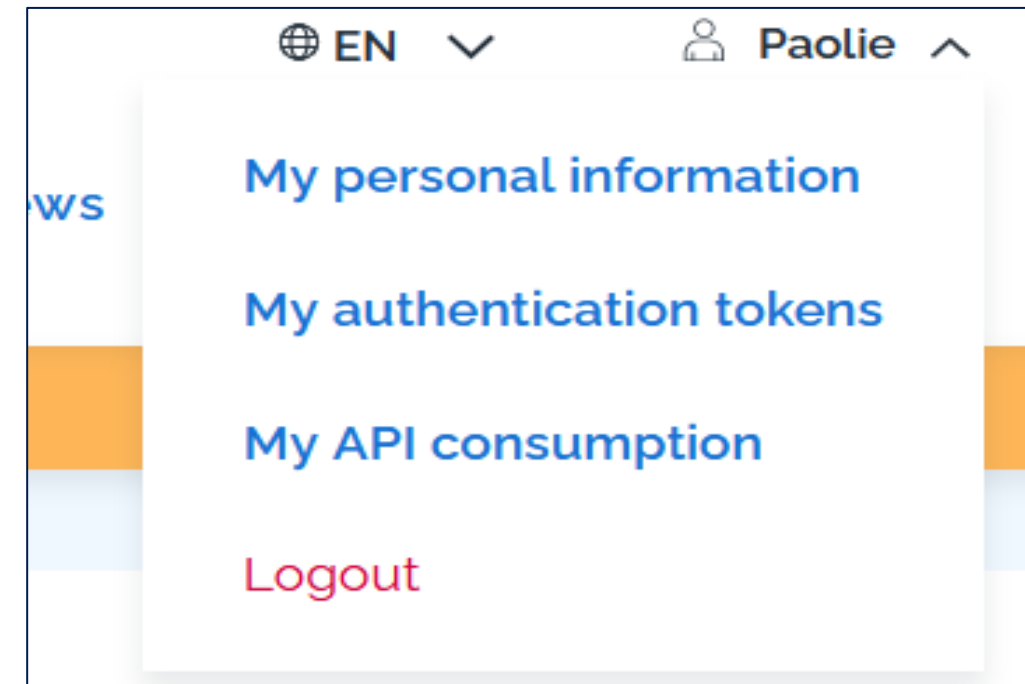
The datasets subject to this license are as follows:

- [Scheduled public transport timetables \(GTFS Datahub\)](#)
- [Real-time data available on the Île-de-France Mobilités exchange platform](#)
- [Elevator status](#)

# Authentication system for restricted-access datasets on "PRIM" website

1

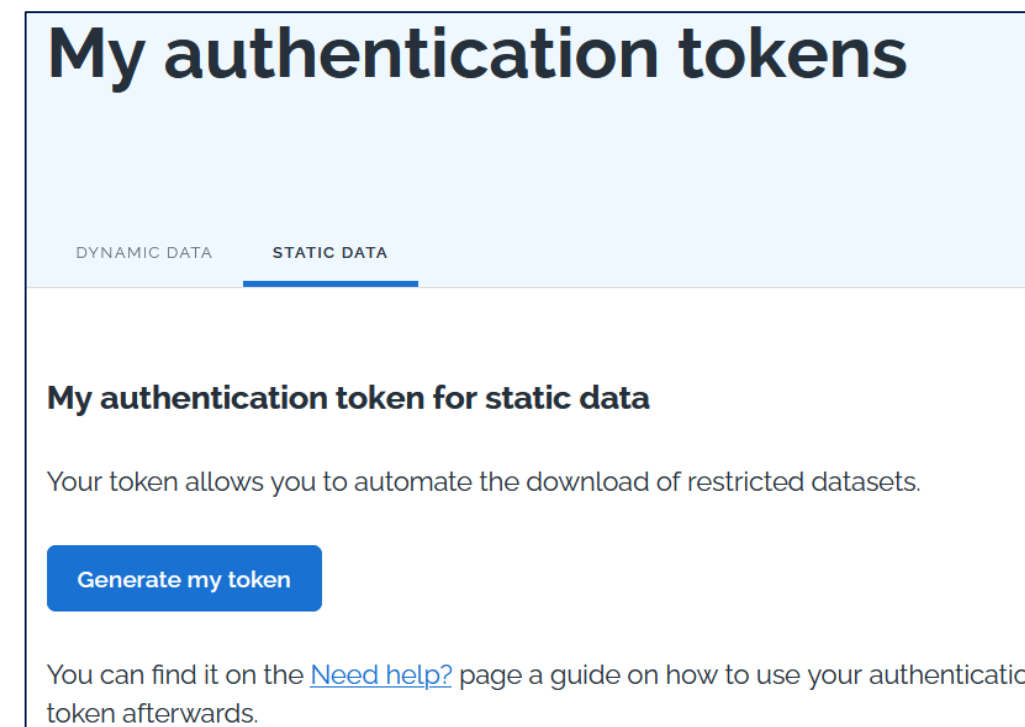
Go to page



"To generate an **authentication token**: log in, go through your personal menu and click on "**My authentication tokens**"

2

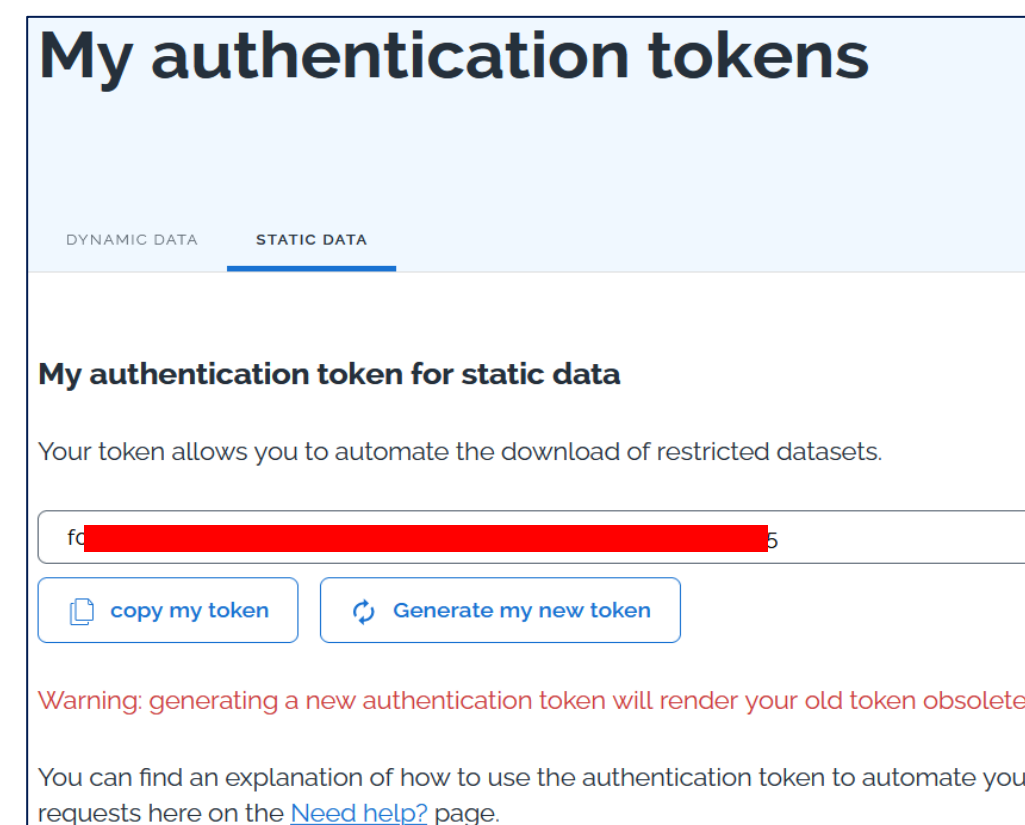
First token generation



Once on the "**My authentication tokens**" page, select the "**DATASET**" tab and click on "**Generate a token**".

3

Viewing and copying tokens



Once generated, you can **view the entire token** and **copy it to your clipboard** (the entire token has been hidden in the example on the left).

# Authentication system for restricted-access datasets on "PRIM" website

4

Regeneration

## Generate my new token

You are about to generate a new authentication token. This will make your old token obsolete. Would you like to confirm the generation ?

The **previously generated token will always be visible** and will not be hidden when the page is reloaded.

You can also regenerate your token: simply click on **"generate my new token"** and then on **"confirm"**.

**Please note:** This will make your previous token obsolete.

5

Inserting the token

The screenshot shows the 'Authorization' tab in a REST client interface. The 'Type' is set to 'API Key'. The 'Key' field contains 'Authorization' and the 'Value' field contains 'apikey c' followed by a redacted token value. The 'Add to' dropdown is set to 'Header'. A note on the left states: 'The authorization header will be automatically generated when you send the request. Learn more about [authorization](#)'.

Once your token has been generated on -PRIM website, simply select **"API Key"** as the **authentication** type, then enter :

**"Authorization"** in the **"Key"** field

**"apikey" + the value of your key** (the two must be separated by a space, as shown in the screenshot) in the **"Value"** field



# Authentication system

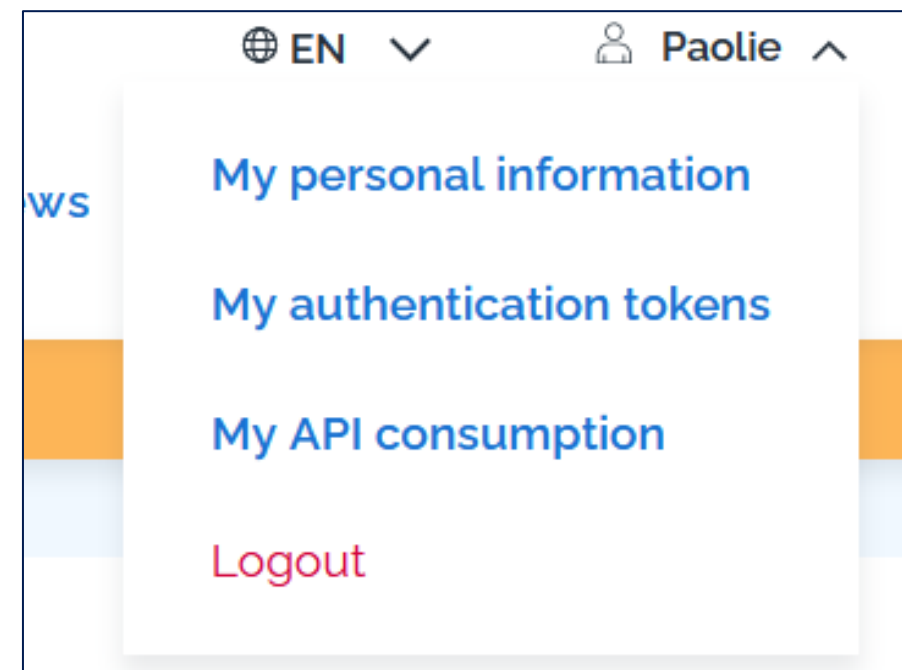
API and Widget

# The API and widget authentication system on the "PRIM" website

The authentication system for dynamic data allows all API or widget users to have a single authentication token to insert in their API and widget requests.

1

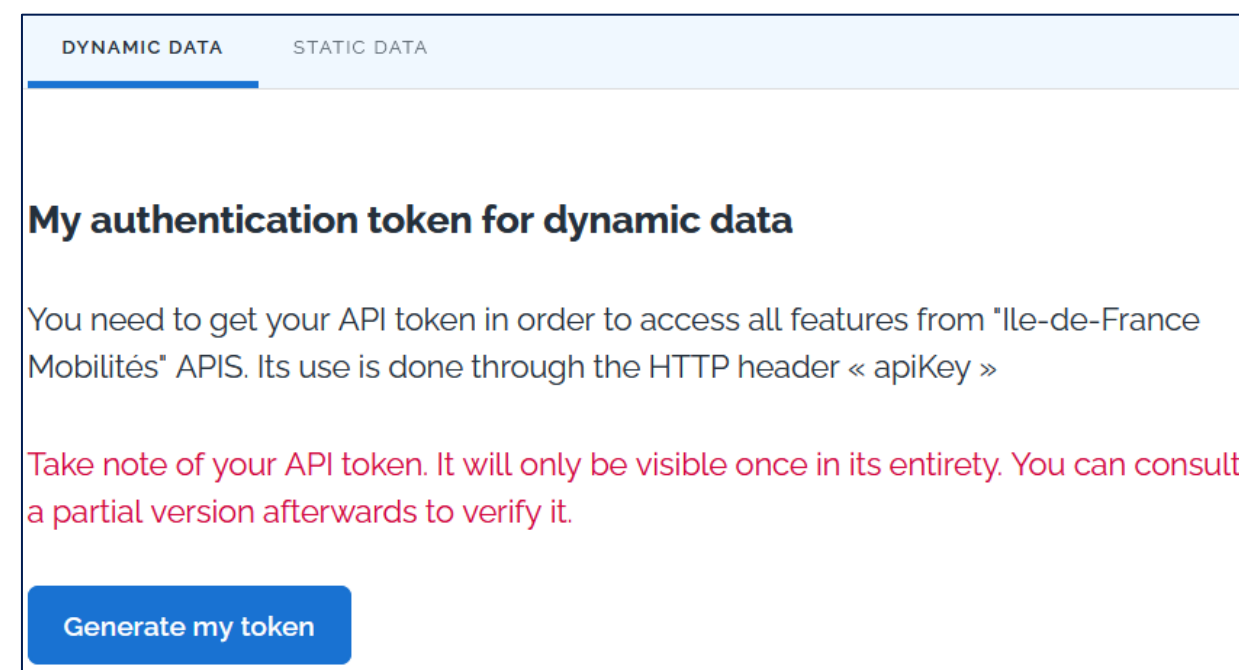
Go to page



"To generate an **authentication token**: log in, go through your personal menu and click on "**My authentication tokens**"

2

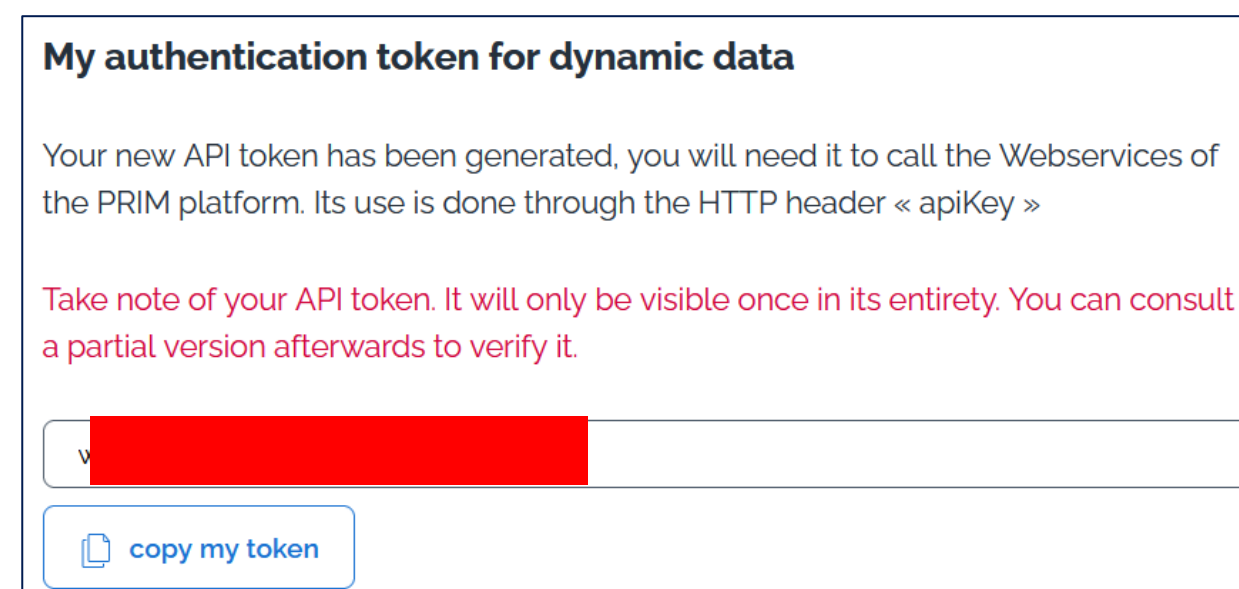
First token generation



Once on the "**My authentication tokens**" page, within the "**API**" tab, a "**Generate my token**" button will allow you to generate this token.

3

Viewing and copying tokens



Once generated, you'll be able to see **the token** in its entirety (the entire token has been hidden in the example on the left).

# The API authentication system on the "PRIM" website

4

Token copy

**My authentication token for dynamic data**

Your new API token has been generated, you will need it to call the Webservices of the PRIM platform. Its use is done through the HTTP header « apiKey »

Take note of your API token. It will only be visible once in its entirety. You can consult a partial version afterwards to verify it.

w [REDACTED] n

copy my token

✓ Your authentication token has been successfully copied to the clipboard

The previously generated token will only be visible once in its entirety, so you can **copy** it and paste it in a safe place.

5

Partial visualization

**My authentication token for dynamic data**

Your current API token allows you to access API functionality. you will need it to call the Webservices of the PRIM platform. Its use is done through the HTTP header « apiKey »

FH42\*\*\*\*\*5DXs

Generate my new token

Warning: generating this new API token will make your old token obsolete.

After generating your first **token**, you can refresh or return to the page to see only part of it (first 4 and last 4 characters).

6

Regeneration

You can regenerate your API **token** if you've lost the **first one**: just click on "**Generate a new API token**".

**Please note**: this token will make the previous token obsolete and will only be visible in its entirety once.

# The API authentication system on the "PRIM" website

7

Inserting the token

KEY	VALUE
<input checked="" type="checkbox"/> apikey	OE0 [REDACTED] me

Once your token has been generated on the PRIM site, simply add the **"API Key"** field to your request header and enter the generated key in the **"Value"** section

# Requesting an API: sample Python code

```
#####  
# Ile-de-France Mobilités Next Source Passages API request - unitary  
  
# coding: utf8  
#####  
1 import requests  
2 from requests.auth import HTTPBasicAuth  
  
3 #IDFM Next Source Passages API url - unitary request  
4 url = 'https://prim.iledefrance-mobilites.fr/marketplace/stop-  
5 monitoring?MonitoringRef=STIF%3AStopPoint%3AQ%3A22113%3A'  
  
6 #The header must contain the API key: apikey, please replace #YOUR API KEY with  
7 your API key  
8 headers = {'Accept': 'application/json', 'apikey': '#YOUR API KEY'}  
  
9 #Send request to server  
10 req = requests.get(url, headers=headers)  
11 #Display response code  
12 print('Status:', req)  
13 #Display response content  
14 print(req.content)  
  
15 #Write received response to file  
16 open('Reponse.xml', 'wb').write(req.content)
```

2 - Request library import

Line 3-5 - Assign API url to url variable

Line 6-8 - Assign header information including your API token (apikey) to the header's variable

> **Once connected, you can generate your API token (apikey) by following the steps described here**

Lines 9 - 10 - The requests.get function takes two arguments: the API url and the header containing the information required for authentication.

Lines 11 - 14 - Display of the various response elements. If the response status is **200** (OK), the request has been successful, and the response will be displayed on the terminal and in a file named **Reponse.xml**.

If you obtain a code other than **200**, please see the following [slide for more details](#), the response will also be displayed on the terminal and in a file named **Reponse.xml**.

Line 15-16 - Storing the response in a file named **Reponse.xml**.

# Support & Documentation

# Support & Documentation

The PRIM Support team will help you use these services through the various documentations provided. Support can be reached by e-mail or through the "Slack" instant discussion forum.

Do you have a question?

A suggestion for improvement?

Don't hesitate to contact us via our

support e-mail: [contact-prim@iledefrance-mobilites.fr](mailto:contact-prim@iledefrance-mobilites.fr)



[Prim platform presentation \(PDF\)](#)

